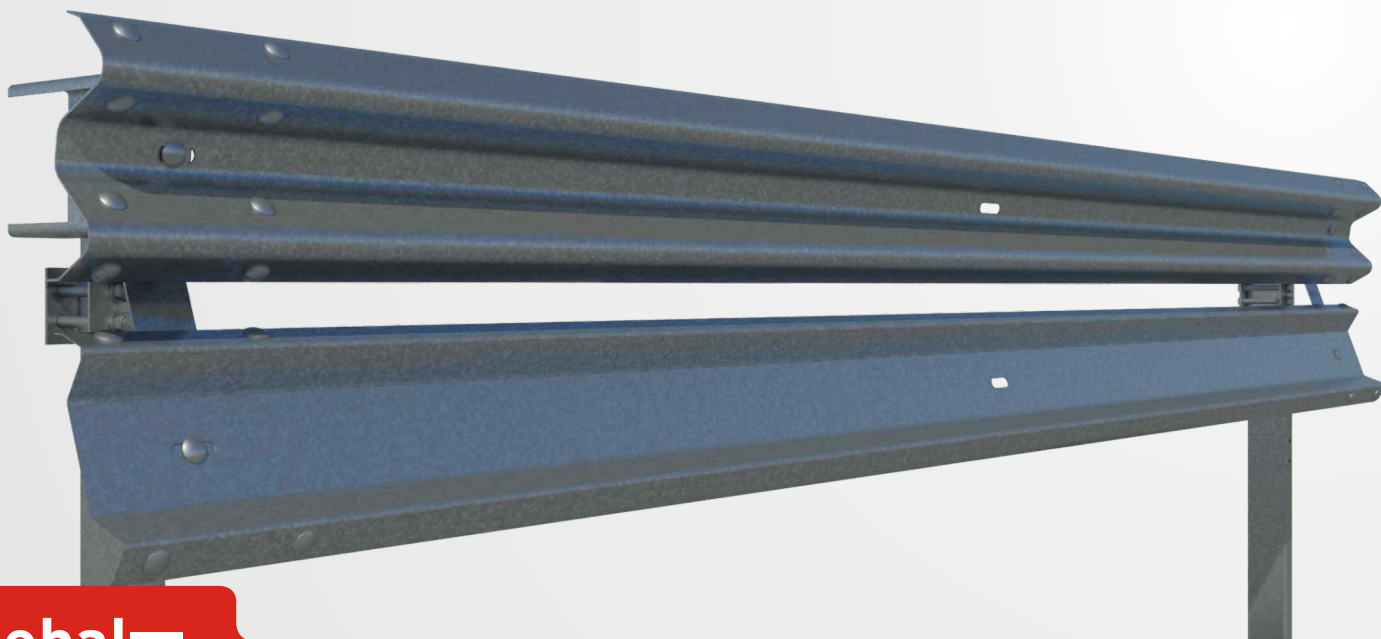


N2	W4	A	1,2m	Severidad I UNE 135900
----	----	---	------	------------------------------

AS-SM6.B (T4)  



**asebal** 

Vehicle Restraint System

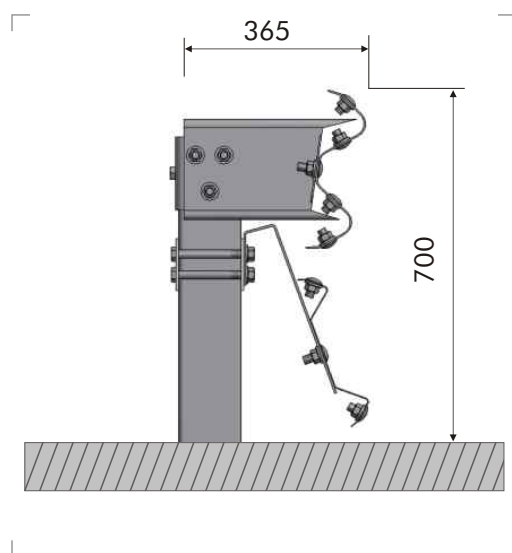
### Definition

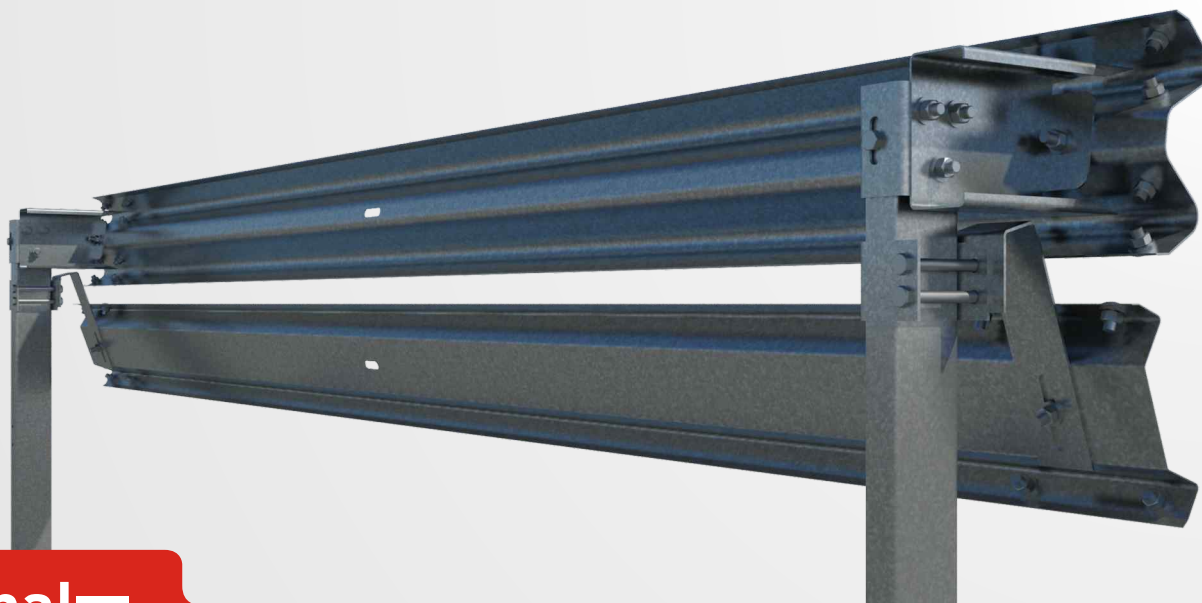
Single metal barrier for lateral side with motorcyclist protection system. System formed by a double wave barrier, spacer, protective beam for motorcyclists and tubular posts 4 metres apart.

### Performance parameters

Containment level	<b>N2</b>	Working width (W)	<b>W4</b>	Impact Severity	<b>A</b>	Dynamic Deflection (D)	<b>1,2m</b>
Impact Severity level	<b>I</b>						

### Profile





**asebal**

Vehicle Restraint System

### Components for sections of 4 m

Item	Part	Uds
1	Standard barrier of 4 m	1
2	Tubular post 120x55x3 of 1,500 mm	1
3	Connector for tubular post	1
4	Standard spacer	1
5	Protective beam for motorists, of 4 m	1
6	Anchorage	1
7	U support	1
8	Round head bolt M16x30, with nut	12
9	Round head bolt M16x40, with nut	2
10	Hexagon head cap bolt M16x35, with nut	5
11	Hexagon head cap bolt M16x150, with nut	2
12	Washer Ø17x35x4 mm	21
13	Reflector	0,5

### Fasteners

